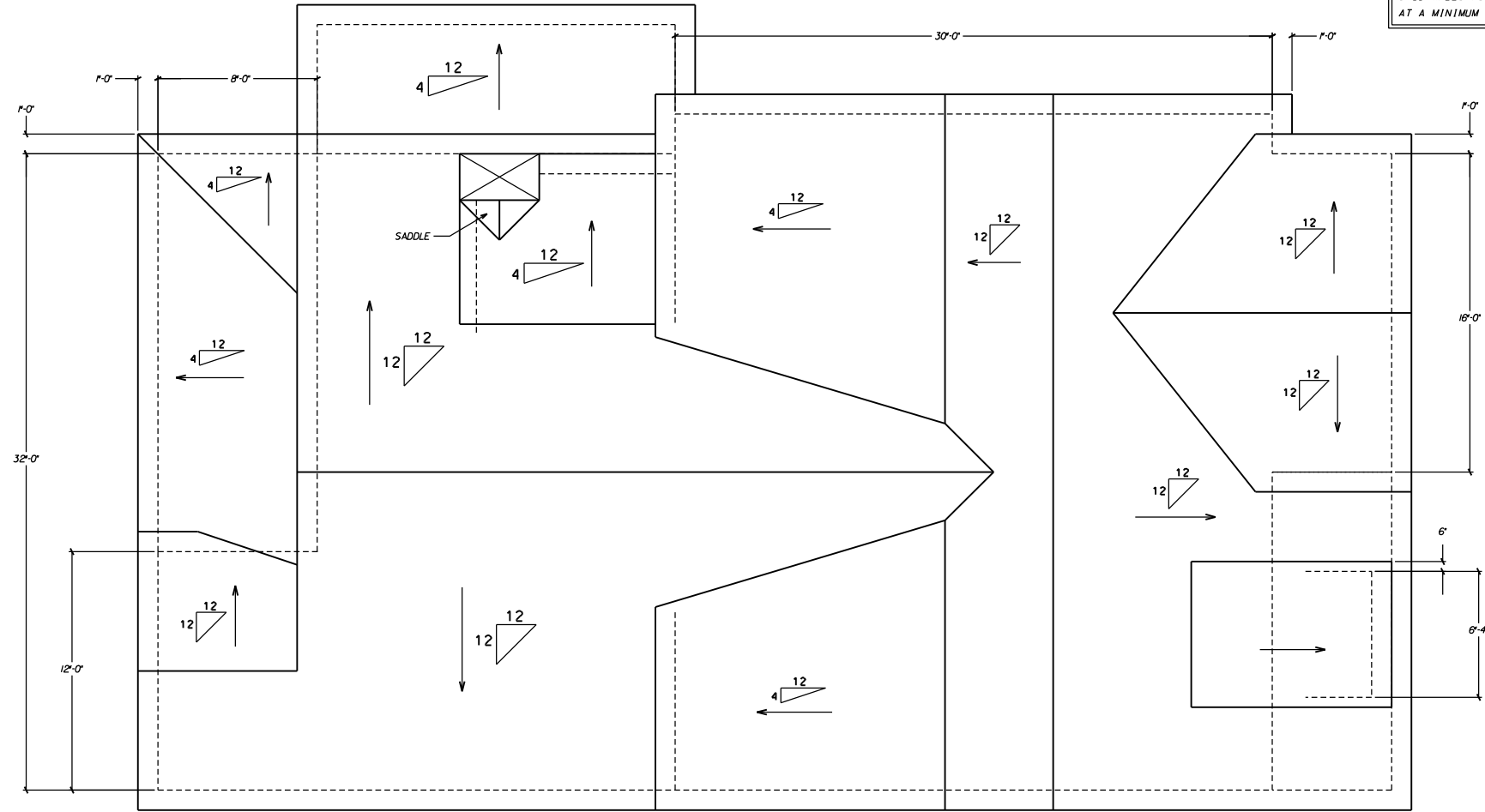


NOTE: ALL CEILING JOISTS AND RAFTER BRACING TO BEAR ON LOAD BEARING WALLS DESIGNED TO CARRY LOAD THRU ALL LEVELS AND TERMINATE AT FOUNDATION AND BE SUPPORTED BY THICKENED SLAB GRADE BEAM OR FOOTING DESIGNED TO CARRY LOAD

NOTE: WHEN TWO ROOFS INTERSECT WITH DIFFERENT ROOF PITCHES, BLOCK TOP OF STUD WALLS AS REQ'D TO LINE UP FASCIAS AT A MINIMUM OF 1'-0" OVERHANG.



NOTE: ATTIC VENTILATION PER LOCAL CODES AND REQUIREMENTS.

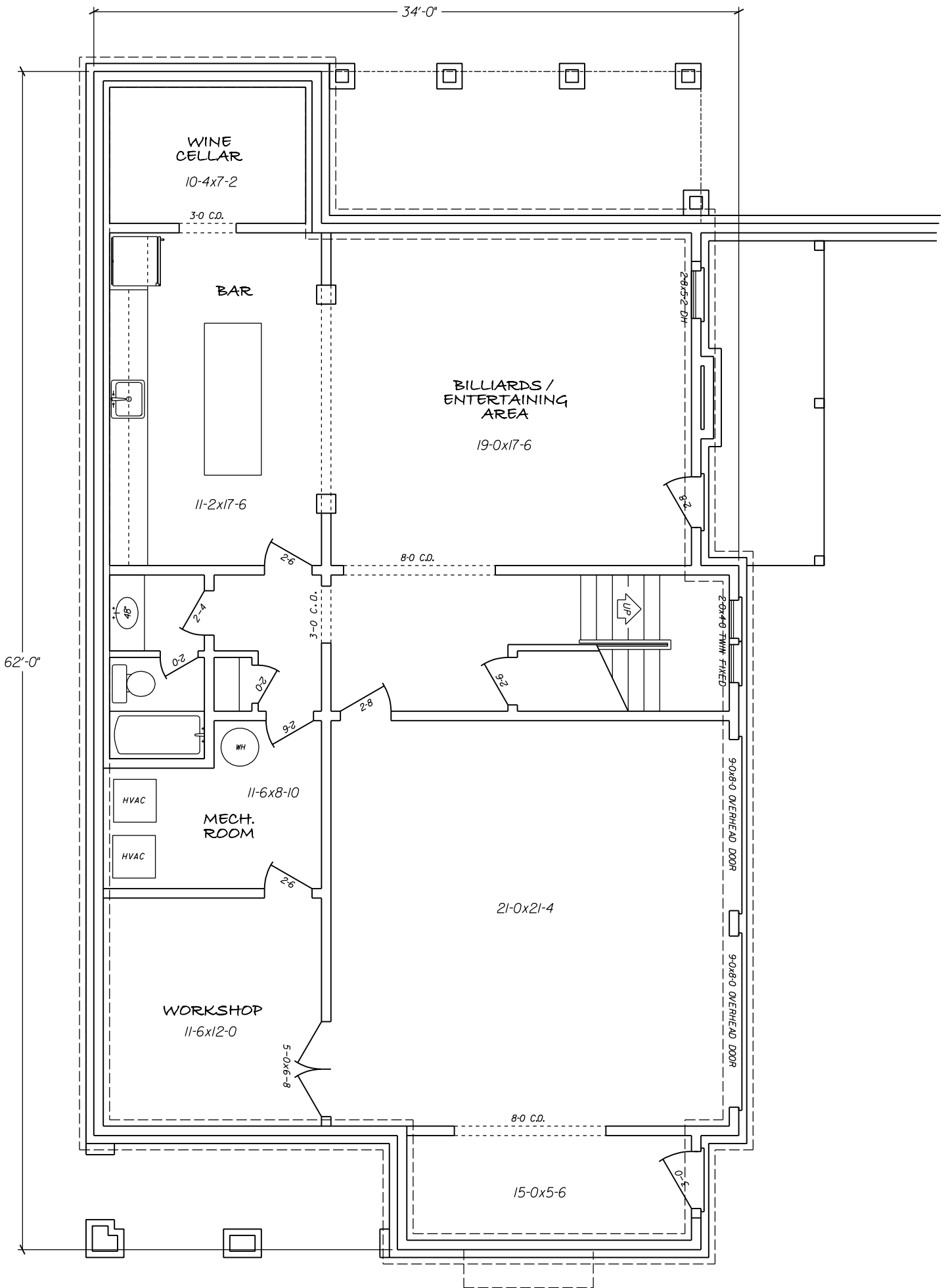
NOTE: RAFTERS ARE PITCHED FROM TOP OF CEILING JOISTS.

ROOF PLAN



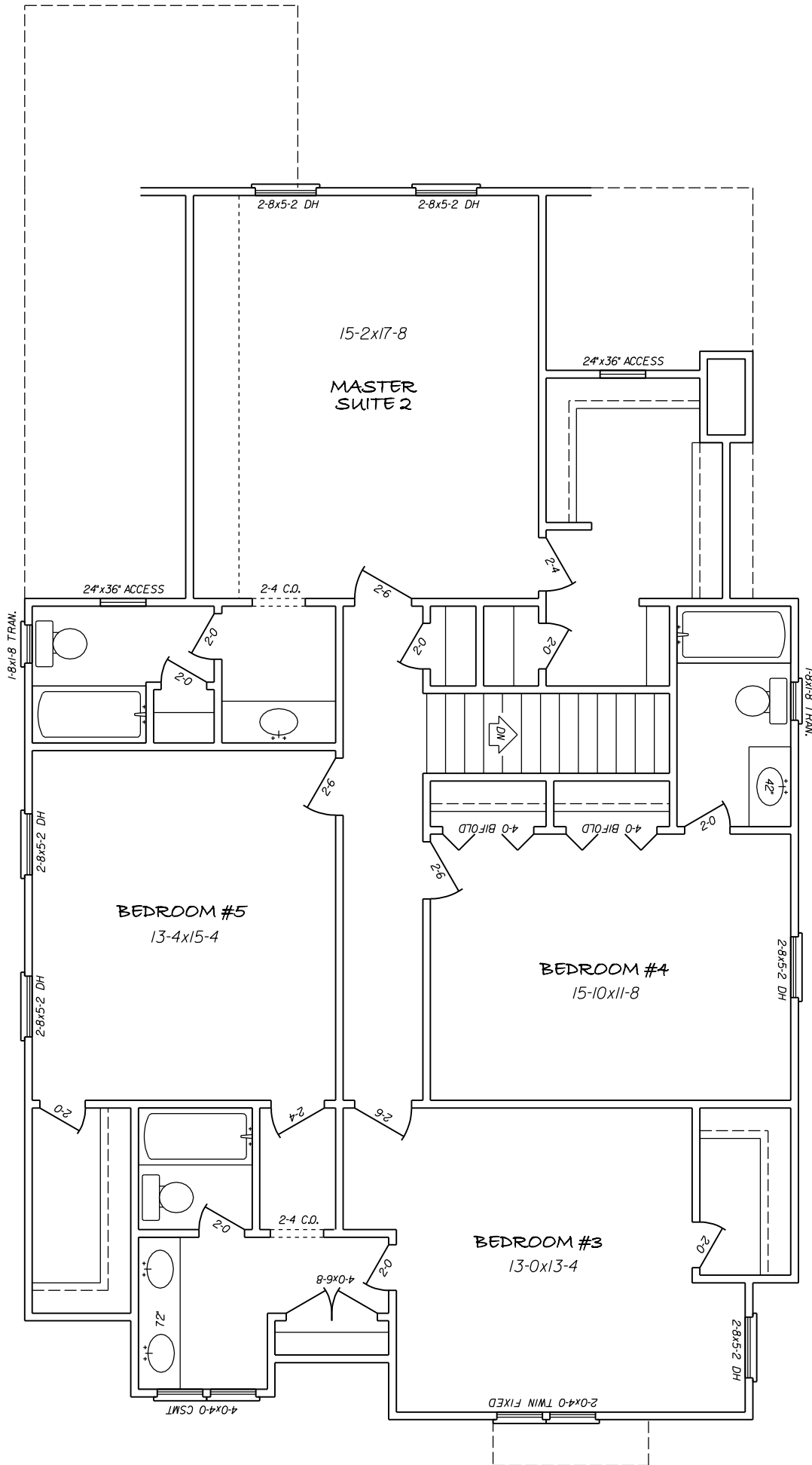
PREPARED BY:





1712 SQ.FT.





1536 SQ.FT.

